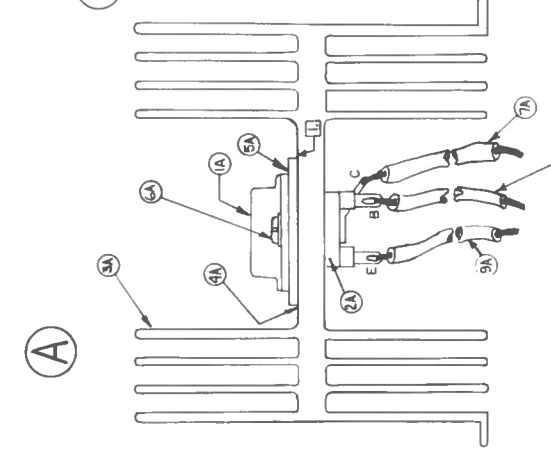
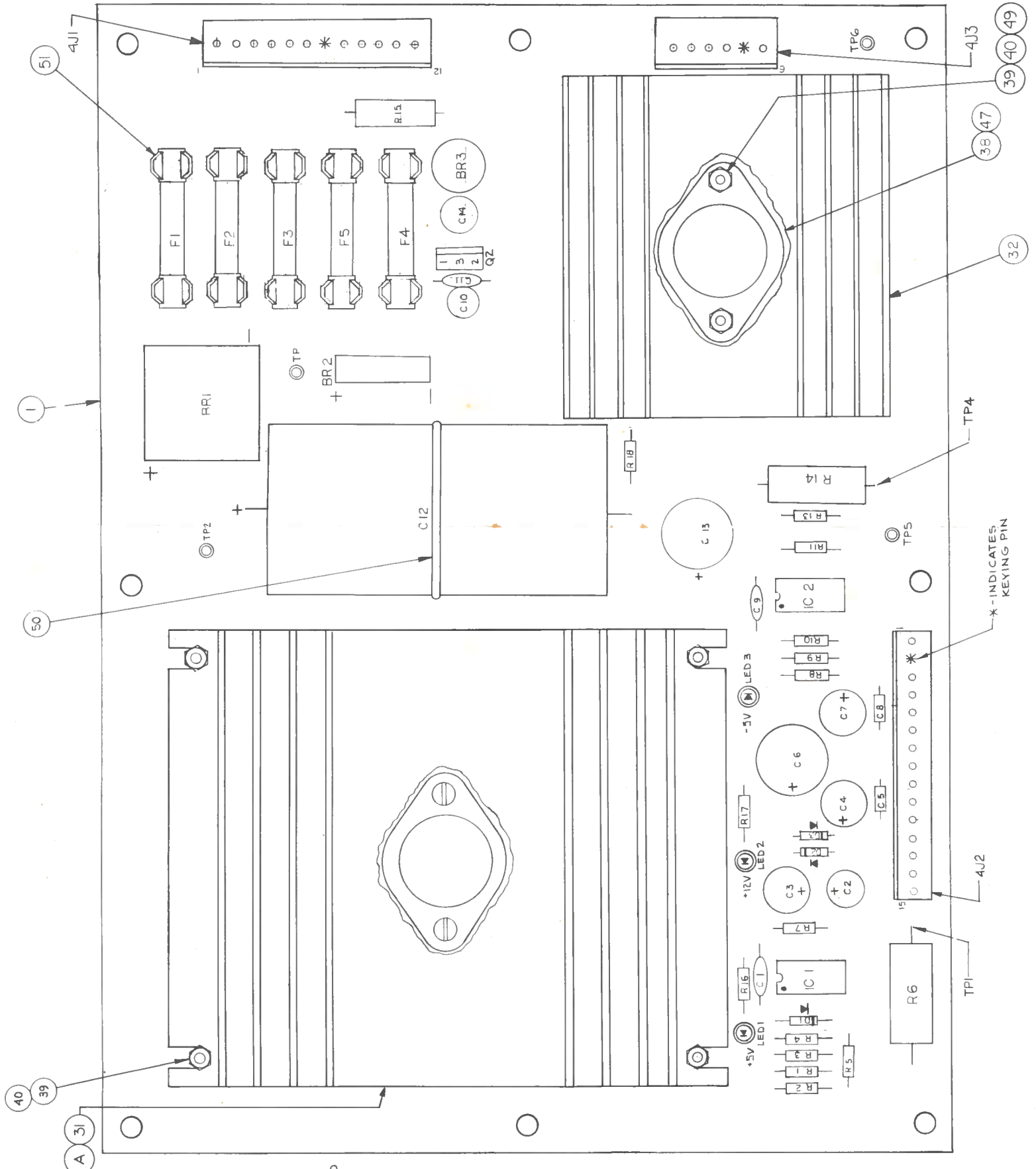


BILL OF MATERIAL

| ITEM NO | PART NO | PART DESIGNATION | DESCRIPTION | REQ'D NO |
|---------|---------------|--------------------|-------------------------------------|----------|
| 1 | 5113-09414-00 | BARE P.C. BOARD | | 1 |
| 2 | 5010-09085-00 | R4 | RESISTOR, 1.5K 5%, 1/4W | 1 |
| 3 | 5010-09541-00 | RB, R7 | RESISTOR, 2.7K 2%, 1/4W | 2 |
| 4 | 5010-09508-00 | R5 | RESISTOR, 270 2%, 1/4W | 1 |
| 5 | 5010-09428-00 | R3 | RESISTOR, 1.5K 2%, 1/4W | 1 |
| 6 | 5010-09509-00 | R11 | RESISTOR, 1.1K 2%, 1/4W | 1 |
| 7 | 5010-09510-00 | R13 | RESISTOR, 12K 2%, 1/4W | 1 |
| 8 | 5010-09542-00 | R10 | RESISTOR, 2.2K 1%, 1/4W | 1 |
| 9 | 5010-09427-00 | R14, R9 | RESISTOR, 499K 1%, 1/4W | 2 |
| 10 | 5010-09426-00 | R2 | RESISTOR, 2.1K 1%, 1/4W | 1 |
| 11 | 5010-09429-00 | R6 | RESISTOR, 1.2K 5%, 1/4W | 1 |
| 12 | 5010-09512-00 | R14 | RESISTOR, 27 5%, 1/4W | 1 |
| 13 | 5040-09421-00 | C3, C7 | CAPACITOR, 100MFD, 25V, RADIAL | 2 |
| 14 | 5040-09422-00 | C2 | CAPACITOR, 47MFD, 50V, RADIAL | 1 |
| 15 | 5040-09420-00 | C6 | CAPACITOR, 1000MFD, 25V, RADIAL | 1 |
| 16 | 5040-09419-00 | C12 | CAPACITOR, 1800MFD, 20V, RADIAL | 1 |
| 17 | 5040-09423-00 | C4 | CAPACITOR, 330MFD, 10V, RADIAL | 1 |
| 18 | 5040-09504-00 | C13 | CAPACITOR, 4700MFD, 35V, RADIAL | 1 |
| 19 | 5043-08996-00 | C5, C8, C11 | CAPACITOR, 1MFD, 50V, AXIAL EBU | 3 |
| 20 | 5043-09565-00 | C1 | CAPACITOR, 470 PFD, 50V, AXIAL XTR | 1 |
| 21 | 5043-09492-00 | C9 | CAPACITOR, 100 PFD, 50V, AXIAL, 52L | 1 |
| 22 | 5040-09505-00 | C14 | CAPACITOR, 220MFD, 16V, RADIAL | 1 |
| 23 | 5040-09493-00 | C10 | CAPACITOR, 22MFD, 10V, RADIAL | 1 |
| 24 | 5010-06258-00 | D1, D2, D3 | DIODE, IN4001 | 3 |
| 25 | 5100-09418-00 | BR1 | BRIDGE RECTIFIER, 35AMP, 100V | 1 |
| 26 | 5100-09513-00 | BR2 | DIODE BRIDGE, 4.0A, 50V | 1 |
| 27 | 5100-09514-00 | BR3 | DIODE BRIDGE, 1.0A, 50V | 1 |
| 28 | 5131-09532-00 | F1, F2 | FUSE, 7A, 5A | 2 |
| 29 | 5131-06314-00 | F3 | FUSE, 4A, 1/8", 250 V. | 1 |
| 30 | 5131-06569-00 | F4 | FUSE, 1A, 5A | 1 |
| 31 | B-8416-00 | F5 | HEAT SINK ASSEMBLY (SEE A) | 1 |
| 32 | 5105-09543-00 | | HEAT SINK | 1 |
| 33 | 5191-09074-00 | 472 | HEADER, 15 PIN, 09-65-1151 | 1 |
| 34 | 5191-09043-00 | 471 | HEADER, 12 PIN, 09-65-1121 | 1 |
| 35 | 5350-09515-00 | Q2 | VOLTAGE REGULATOR 7905 | 1 |
| 36 | 5460-09424-00 | IC1, IC2 | VOLTAGE REGULATOR 783 | 2 |
| 37 | 5824-09248-00 | TP2, TP3, TP5, TP6 | TERMINAL #1502-(TEST POST) | 4 |
| 38 | 20-9129-00 | | THERMAL COMPOUND - .02 OUNCE | AR |
| 39 | 4005-01034-01 | | 5-40.42/16 RH. MECH. SCREW | 6 |
| 40 | 4405-01112-00 | | 5-40 HEX NUT | 6 |
| 41 | 5161-09552-00 | Q1 | 2N3055 TRANSISTOR NPN | 1 |
| 42 | 5131-09519-00 | F5 | FUSE, 5A, 5A | 1 |
| 43 | 5191-09038-00 | 473 | HEADER, 6 PIN, 09-65-1061 | 1 |
| 44 | 5010-09544-00 | R15 | RESISTOR, 2.0K 5%, 1/4W | 1 |
| 45 | 5010-09416-00 | PI6, PI8 | RESISTOR, 470 5%, 1/4W | 2 |
| 46 | 5010-09514-00 | R17 | RESISTOR, 1.2K 5%, 1/4W | 1 |
| 47 | 5101-09538-00 | | INSULATOR, MICA, 3mil | 1 |
| 48 | 5671-09019-00 | LED1, LED2, LED3 | LED, RED | 3 |
| 49 | 03-1558 | | INSULATOR, NYLON | 2 |
| 50 | 03-1520 | | TIE WRAP | 1 |
| 51 | 6732-09178-00 | | FUSE HOLDER | 10 |



| ITEM NO | PART NO | DESCRIPTION | REQ'D NO |
|---------|---------------|--|----------|
| 1A | 5162-09425-00 | TRANSISTOR NPN 2N6057 | 1 |
| 2A | 5100-09445-00 | TRANSISTOR-SOCKET TO3 | 1 |
| 3A | 5705-09431-00 | HEAT SINK | 1 |
| 4A | 20-9129-00 | THERMAL COMPOUND 1.5 OUNCE | 1 |
| 5A | 5701-09336-00 | TO3 3 MIL MICA INSULATOR | 1 |
| 6A | 4006-01003-00 | MS-6-22 1/2-P-PH -5 | 2 |
| 7A | 5853-09591-00 | LEAD WIRE #18 AWG 4/3/8 STRIPPED (GRN) | 1 |
| 8A | 5853-09592-00 | LEAD WIRE #18 AWG 4/3/8 STRIPPED (WHT) | 1 |
| 9A | 5853-09593-00 | LEAD WIRE #18 AWG 4/3/8 STRIPPED (YEL) | 1 |

NOTES:
 1. HEAT SINK COMPOUND MUST BE APPLIED BETWEEN MICA INSULATOR AND HEAT SINK AND BETWEEN MICA INSULATOR AND TRANSISTOR.

* - INDICATES KEYING PIN